



SEA spol. s r.o.

Společnost pro elektronické aplikace

Company SEA spol. s r.o. was established in 1992 and holds the ISO 9001:2001 certificate.

SP8, SPA8, SP8 BOX, SPA8 BOX

Control and Monitoring of Technology equipment via GSM

Basic Characteristics SP8

1, 2, 3, 4, 5, 6, 7, 8, 9, 10, 11, 12, 13, 14, 15, 16, 17, 18, 19, 20, 21, 22, 23, 24, 25, 26, 27, 28, 29, 30, 31, 32, 33, 34, 35, 36, 37, 38, 39, 40, 41, 42, 43, 44, 45, 46, 47, 48, 49, 50, 51, 52, 53, 54, 55, 56, 57, 58, 59, 60, 61, 62, 63, 64, 65, 66, 67, 68, 69, 70, 71, 72, 73, 74, 75, 76, 77, 78, 79, 80, 81, 82, 83, 84, 85, 86, 87, 88, 89, 90, 91, 92, 93, 94, 95, 96, 97, 98, 99, 100.



Advantages of SP8

- Simple installation
- Easy control
- Configuration and monitoring SW
- Backup power supply

Technical Data SP8

Power supply: **VK MC BOX + OM**

AKU battery: **1 61 KDMND. AD15+ 1 OA**

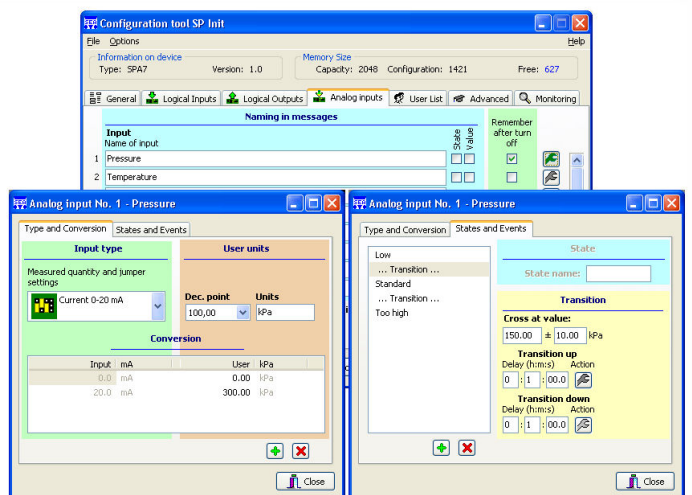
Logical inputs galvanically separated: **81, / C KMS + OM**

Logical outputs galvanically separated: **9, / / C MD.**

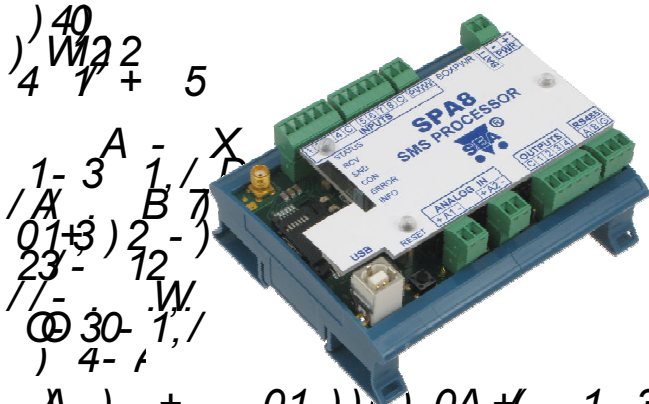
Communication Ports: **G 5+ 3. 13**
12 1/ 13DR9 S+ / A) OA- 3)

Operating temperature: **XY SY**

PC configuration SW (free of charge)
For Windows 2000, XP and Vista



Basic characteristic SPA8



Technical specifications for SPA8:

- Power supply: 12V DC
- AKU: 1.5Ah
- Logical inputs: 8
- Logical outputs: 9
- Analog inputs: 4
- Communication ports: RS485
- Operating temperature: -30 to +50 °C

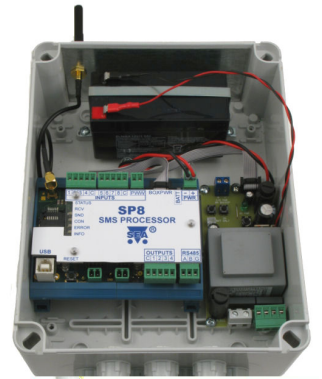
Basic characteristic SP8 BOX

Technical specifications for SP8 BOX:

- Power supply: 24V DC
- AKU: 2.0Ah
- Protection: 6SS
- Operating temperature: -30 to +50 °C

Advantages of SP8 BOX

- Simple installation
- AKU for long-term power failure



Technical Data SPA8

Power supply: 12V DC
AKU: 1.5Ah

Logical inputs galvanically separated: 8

Logical outputs galvanically separated: 9

Analog inputs: 4

Communication ports: RS485
Operating temperature: -30 to +50 °C

Technical Data SP8 BOX

Power supply: 24V DC

Protection: 6SS

Operating temperature: -30 to +50 °C

Use of SP8, SPA8 (BOX)

- Boiler houses, heating plants and heat pumps
- Industrial objects
- Technology processes

GSM device comparison

	SP6	SPA7	SPA7+SPA7 EXP	SP8	SPA8
Backup AKU				1.5Ah	1.5Ah
Log. inputs	8	8	8	8	8
Log. input	0	0	0	0	0
Analog inputs		4	4		4
Log. outputs		9	9	9	9
Analog outputs			X		